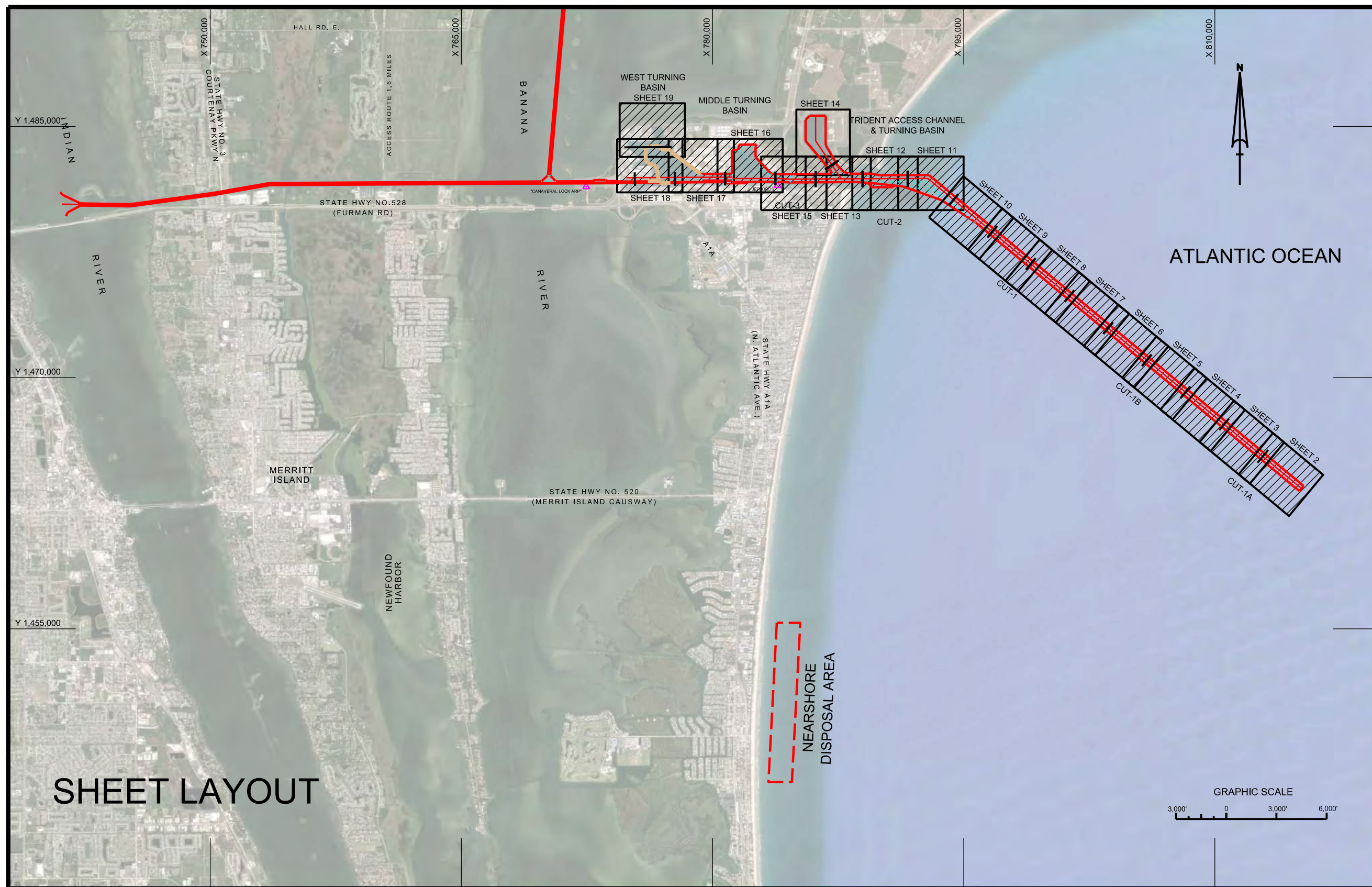
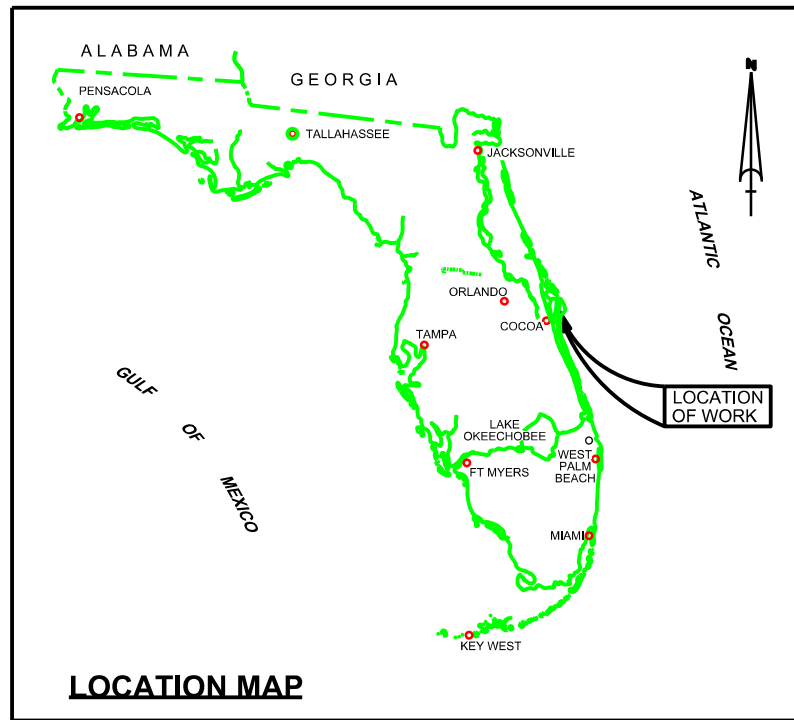


# CANAVERAL HARBOR BREVARD COUNTY, FLORIDA 1Q PORT HYDRO EXAM SURVEY FY21



### SURVEY NOTES

- REFER TO SURVEY NO. 21-023.
  - TIDAL REDUCTIONS WERE OBTAINED UTILIZING A REAL-TIME KINEMATIC (RTK) GPS AND REFERENCED TO MLLW UTILIZING A HYPACK KINEMATIC TIDE DATUM (KTD) MODEL. KTD FILE NAME IS: "CANAVERALHBR-2015 02 20.KTD".
  - ALL ELEVATIONS ARE BELOW THE CHART DATUM UNLESS PRECEDED BY A (+) SIGN.
  - PLANE COORDINATES ARE BASED ON THE TRANSVERSE MERCATOR PROJECTION FOR THE EAST ZONE OF FLORIDA AND REFERENCED TO NORTH AMERICAN DATUM OF 1983 (NAD83).
  - ALL STATIONING REFERS TO THE CENTERLINE OF THE CHANNEL.
  - THIS SURVEY WAS PERFORMED USING REAL-TIME KINEMATIC (RTK) GPS POSITIONING WITH THE FOLLOWING REFERENCE BASE LOCATION:  
\*REFERENCE BASE LOCATED AT "CANAVERAL LOCK ARP" (PID: BBCV67)  
\*TIDE STAFF LOCATED FROM "JEFFORDS" (PID: BBCQ55)
  - DEPTHS DEPICTED BY THIS SURVEY ARE REFERENCED TO MLLW, TIDAL EPOCH 1983-2001 AS REPORTED BY THE NATIONAL OCEANIC AND ATMOSPHERIC ADMINISTRATION (NOAA). A MODIFIED VERSION OF NOAA'S VDATUM MODEL WAS USED TO CALIBRATE TO THE PUBLISHED MLLW HEIGHTS OF THE BENCHMARKS BELOW:  
NOAA TIDAL STATION 872-1604, TRIDENT PIER, CANAVERAL, FL (PID: BBCQ55)
  - VERTICAL MEASUREMENTS WERE MADE USING A RESON T20P MULTI-BEAM SYSTEM AND A ROSS SMARTSOUNDER DUAL-FREQUENCY 28/200 KHZ SINGLE-BEAM TRANSDUCER OPERATING AT 28/200 KHZ. HIGH FREQUENCY SOUNDINGS ARE SHOWN FOR CUT-1A, WEST ACCESS CHANNEL AND THE WEST TURNING BASIN. LOW FREQUENCY SOUNDINGS SHOWN FOR CUTS 1, 1B, 2, 3, MTB, TRIDENT ACCESS CHANNEL AND THE POSEIDON WHARF.
- | VESSEL     | DATE OF SURVEY | CUT   |
|------------|----------------|---|
| FLORIDA II | 10 DEC 2020    | CUT-1A  |
| SB-36      | 15 DEC 2020    | CUT-2 & 3, TRIDENT ACCESS CHANNEL, MTB, WAC, POSEIDON WHARF, NORTH CARGO PIER |
| FLORIDA II | 16 DEC 2020    | CUT-1B  |
| SB-36      | 17 DEC 2020    | WEST ACCESS CHAN., WEST TURNING BASIN   |
| FLORIDA II | 17-18 DEC 2020 | CUT-1   |
- AIDS TO NAVIGATION WERE LOCATED DURING THIS SURVEY.
  - THE INFORMATION DEPICTED ON THIS MAP REPRESENTS THE RESULTS OF SURVEYS MADE ON THE DATES INDICATED ABOVE AND CAN ONLY BE CONSIDERED AS INDICATING THE GENERAL CONDITIONS AT THAT TIME. THIS CHART IS SOLELY FOR THE DISTRIBUTION OF AVAILABLE DEPTHS AT THE TIME OF THE SURVEY.
  - SURVEY ACCURACY PERFORMANCE STANDARDS, QUALITY CONTROL, AND QUALITY ASSURANCE REQUIREMENTS WERE FOLLOWED DURING THIS SURVEY IN ACCORDANCE WITH USACE EM 1110-2-1003, HYDROGRAPHIC SURVEYING, 30 NOV 2013.

LEGEND	
	MONUMENT
	LIGHTED BEACON
	GREEN DAYBEACON
	RED DAYBEACON
	RED LIGHTED BUOY
	GREEN LIGHTED BUOY
	CAN BUOY
	NUN BUOY
	TIDE STAFF
	PROJECT DEPTH

US Army Corps of Engineers  
Jacksonville District  
SAFETY ON THIS JOB  
DEPENDS ON YOU

DEPARTMENT OF THE ARMY  
JACKSONVILLE DISTRICT, CORPS OF ENGINEERS  
JACKSONVILLE, FLORIDA

DESIGNED BY: WRM  
DRAWN BY: WRM  
CHECKED BY: WRM  
DATE: DEC 2020

21-023-CB-S-BRD1.DGN  
C:\P01881.DGN  
CHAYOUTS.DGN

Reference File: 21-023-PORT.DGN  
File Name:

CANAVERAL HARBOR  
BREVARD COUNTY, FLORIDA  
**1Q PORT HYDRO EXAM SURVEY FY21**  
35, 39, 41, 43, 44 AND 46-FOOT PROJECT  
INDEX, LOCATION AND VICINITY  
PLAN

Scale: AS SHOWN  
Drawing no.  
**1 / 18**  
SHEET 1 OF 19



US Army Corps of Engineers  
Jacksonville District

SAFETY ON THIS JOB  
DEPENDS ON YOU


DEPARTMENT OF THE ARMY  
JACKSONVILLE DISTRICT, CORPS OF ENGINEERS  
JACKSONVILLE, FLORIDA

Drawn By: GHR  
Checked By: WRM  
Date: DEC 2020

21-023-A-03-BR10-DGN  
CANAVIAL HARBOR-CANICCC\_VTB-DGN  
21-023-A-03-01-A, H, DGN  
21-023-A-03-048-DGN  
Reference Map: 21-023-A-03-01-DGN  
File Name:

CANAVIAL HARBOR  
BREVARD COUNTY, FLORIDA

**1Q PORT HYDRO EXAM SURVEY FY21**  
35, 39, 41, 43, 44 AND 46-FOOT PROJECT  
STA. 0+00 THRU 30+00 CUT - 1A

Scale: AS SHOWN  
Drawing no.  
**2 / 18**  
SHEET 2 OF 19

ATLANTIC OCEAN

46

CUT-1A

MATCHLINE SHEET NO. 3 STA. 30+00

STA. 0+00 CUT-1A

STA. 25+00 STA. 20+00 STA. 15+00 STA. 10+00 STA. 5+00

RGE\_00

RGE\_200

RGE\_400

X 1813.500 X 1814.000 X 1814.500 X 1815.000 X 1815.500 X 1816.000

Y 1.865.000

Y 1.865.000

Y 1.865.000

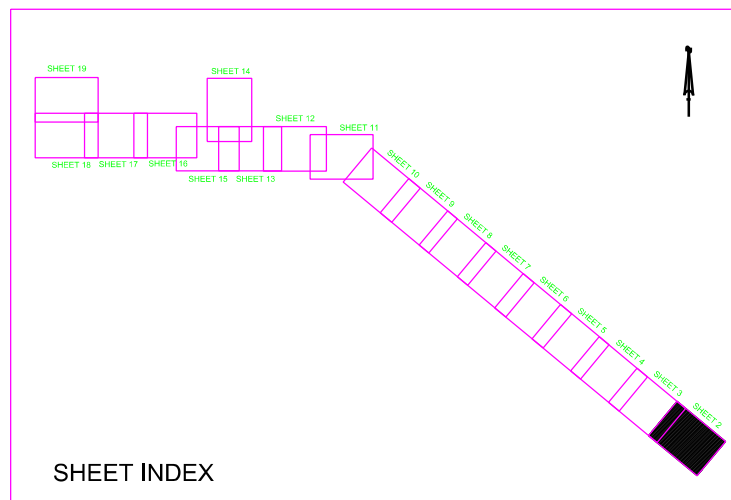
Y 1.865.000

RGE\_00

RGE\_200

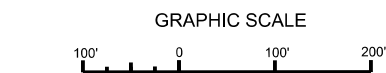
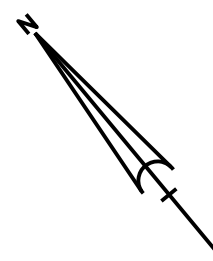
RGE\_400

RGE\_400



SHEET INDEX

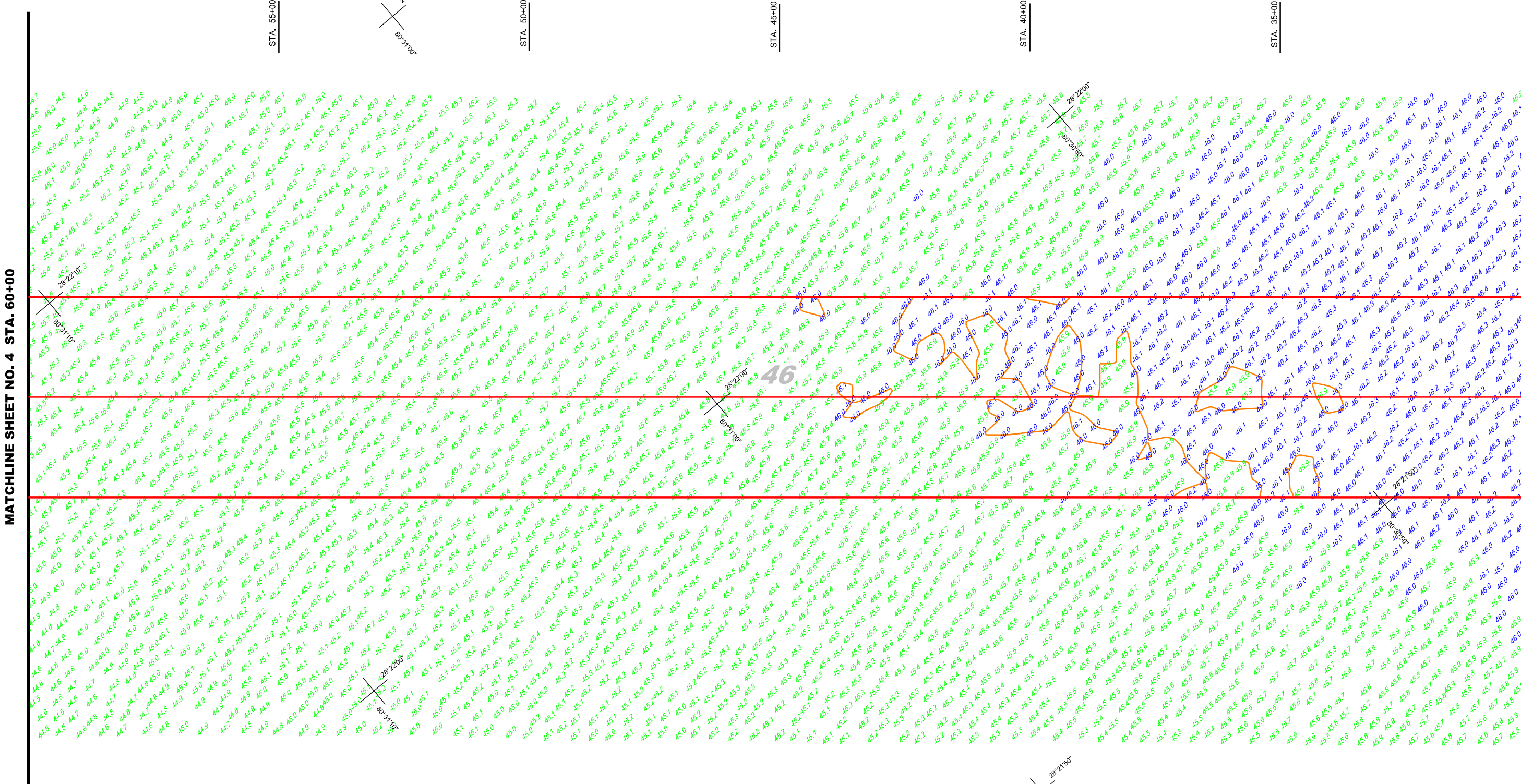
≤41.9	
42.0-43.9	
44.0-45.9	
≥46.0	



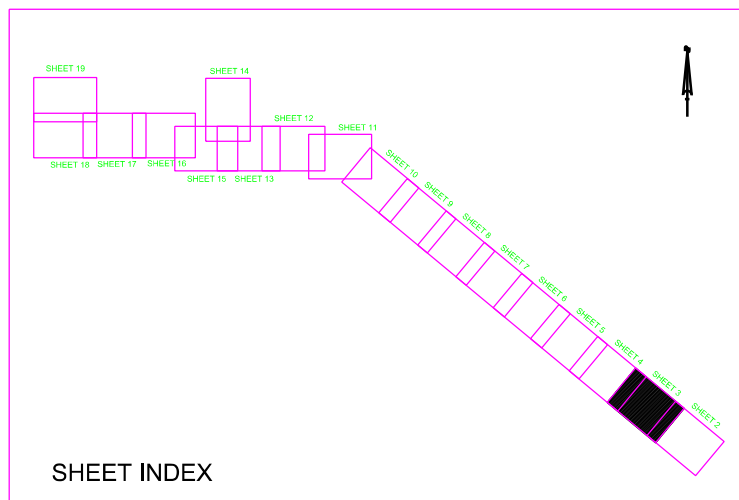
NOTES:

- 1. REFER TO SURVEY NO. 21-023.
- 2. SEE SHEET NO. 1 FOR SURVEY NOTES.
- 3. LAT/LONG GRID TICS ARE AT 10-SECOND INTERVALS.

ATLANTIC OCEAN



CUT-1A



DEPTH COLOR CODE	
≤41.9	Red
42.0-43.9	Orange
44.0-45.9	Green
≥46.0	Blue



NOTES:

- REFER TO SURVEY NO. 21-023.
- SEE SHEET NO.1 FOR SURVEY NOTES.
- LAT/LONG GRID TICS ARE AT 10-SECOND INTERVALS.

Checked By: GHR

Checked By: WRM

Checked By: WRM

Checked By: WRM

Checked By: WRM

Checked By: WRM

Checked By: WRM

Checked By: WRM

Checked By: WRM

Checked By: WRM

Checked By: WRM

Checked By: WRM

Checked By: WRM

Checked By: WRM

Checked By: WRM

Checked By: WRM

Checked By: WRM

Checked By: WRM

Checked By: WRM

Checked By: WRM

Checked By: WRM

Checked By: WRM

Checked By: WRM

Checked By: WRM

Checked By: WRM

Checked By: WRM

Checked By: WRM

Checked By: WRM

Checked By: WRM

Checked By: WRM

Checked By: WRM

Checked By: WRM

CANAVEL HARBOR  
BREVARD COUNTY, FLORIDA

1 Q PORT HYDRO EXAM SURVEY FY21  
35, 39, 41, 43, 44 AND 46-FOOT PROJECT  
STA. 30+00 THRU 60+00 CUT - 1A  
PLAN

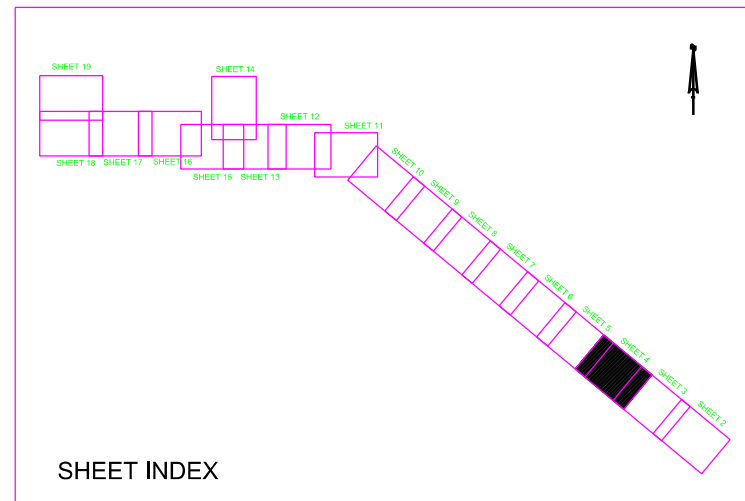
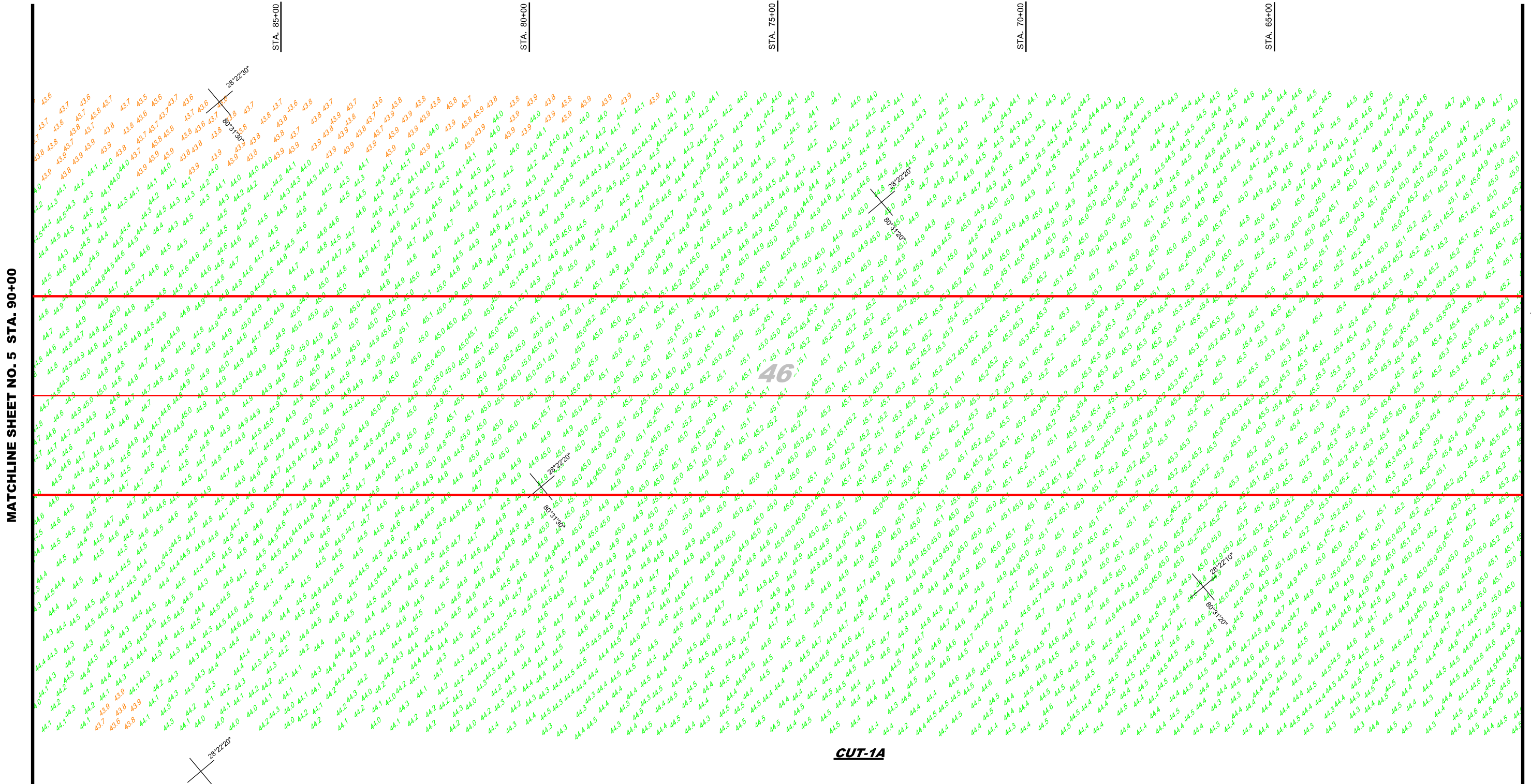
Scale: AS SHOWN

Drawing no.

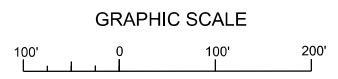
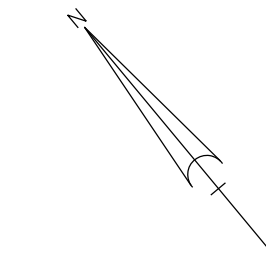
3 / 18

SHEET 3 OF 19

ATLANTIC OCEAN



DEPTH COLOR CODE	
≤41.9	Red
42.0-43.9	Orange
44.0-45.9	Green
≥46.0	Blue



- NOTES:
- REFER TO SURVEY NO. 21-023.
  - SEE SHEET NO.1 FOR SURVEY NOTES.
  - LAT/LONG GRID TICS ARE AT 10-SECOND INTERVALS.

DEPARTMENT OF THE ARMY  
JACKSONVILLE DISTRICT, CORPS OF ENGINEERS  
JACKSONVILLE, FLORIDA

21-023-C&S-HARBOR/DGN  
CANAVERAL HARBOR/C&S/MB/DGN  
21-023-A&S/CONV\_CIA\_H/DGN

Designed by: WRM  
Checked by: WRM  
Date: DEC 2020

CANAVERAL HARBOR  
BREVARD COUNTY, FLORIDA

**1Q PORT HYDRO EXAM SURVEY FY21**  
35, 39, 41, 43, 44 AND 46-FOOT PROJECT  
STA. 60+00 THRU 90+00 CUT - 1A  
PLAN



US Army Corps  
of Engineers  
Jacksonville District

SAFETY ON THIS JOB  
DEPENDS ON YOU

No.	Name	Symbol	Zone
1	ABCD	N	AN
2	ABCD	N	AN

DEPARTMENT OF THE ARMY  
JACKSONVILLE DISTRICT CORPS OF ENGINEERS  
JACKSONVILLE, FLORIDA

Checked by:  
GHR  
Designed by:  
WRM  
DW: PFC  
WRM  
Date:  
DEC 2020

21-023-C&S-HRDR-DGN  
CANAVERAL HARBOR-C&S-NMCC\_VYB-DGN  
21-023-A&S-C&S-C&B-LF-DGN  
21-023-A&S-SOUL-C&A-HF-DGN  
Revision No:  
21-023-A&S-HRDR-DGN  
File Name:

CANAVERAL HARBOR  
BREVARD COUNTY, FLORIDA  
**1Q PORT HYDRO EXAM SURVEY FY21**  
35, 39, 41, 43, 44 AND 46-FOOT PROJECT  
**STA. 90+00 CUT - 1A THRU STA. 10+00 CUT - 1B**  
PLAN

Scale: AS SHOWN  
Drawing no.

**5 / 18**

SHEET 5 OF 19

ATLANTIC OCEAN

P.I. STA. 110+00 CUT-1A  
P.I. STA. 0+00 CUT-1B

STA. 105+00

STA. 100+00

STA. 95+00

STA. 5+00

MATCHLINE SHEET NO. 6 STA. 10+00

MATCHLINE SHEET NO. 4 STA. 90+00

RGE. 00

RGE. 00

RGE. 200

RGE. 200

RGE. 400

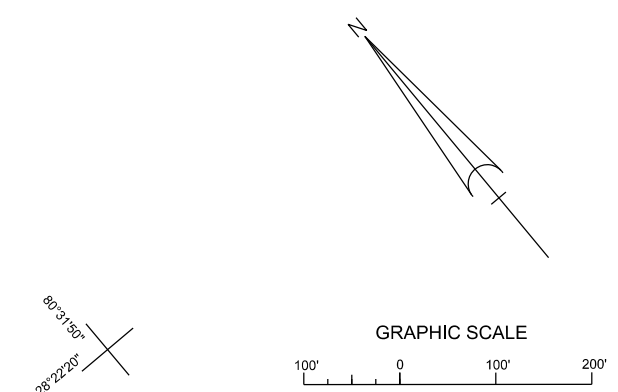
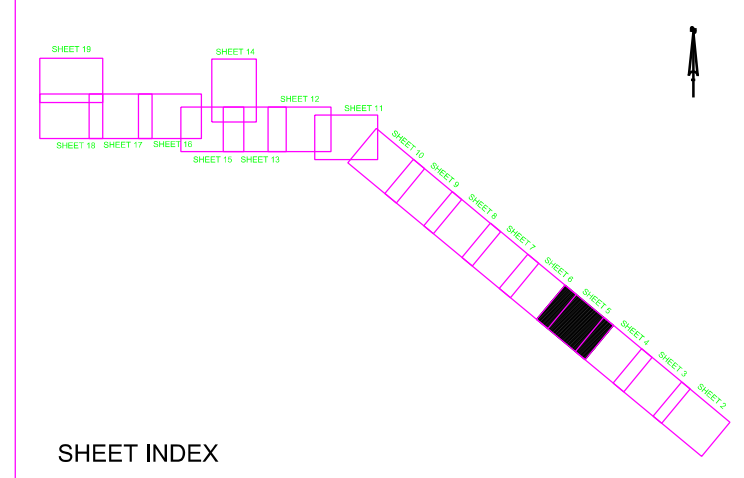
RGE. 400

**46**

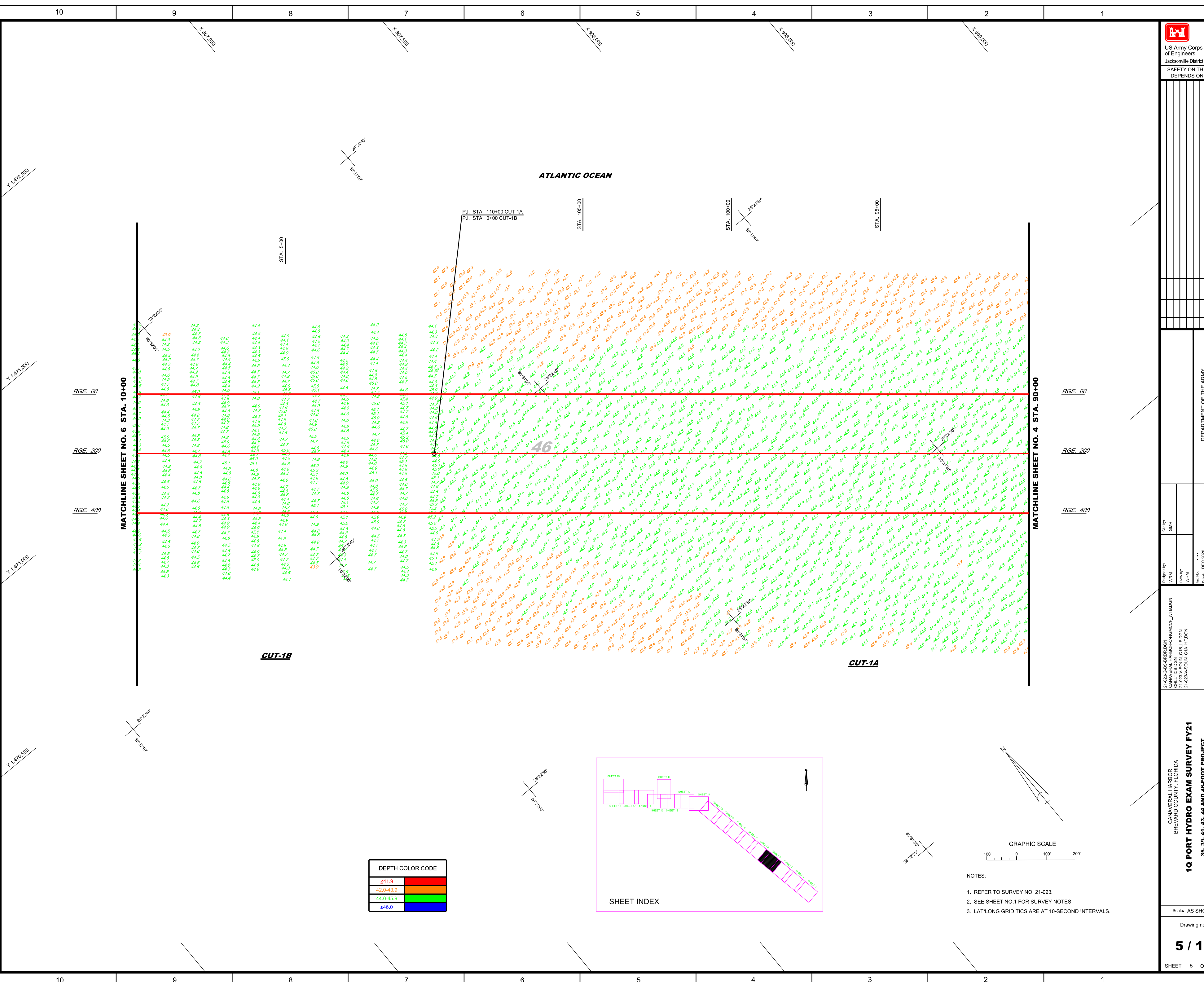
CUT-1B

CUT-1A

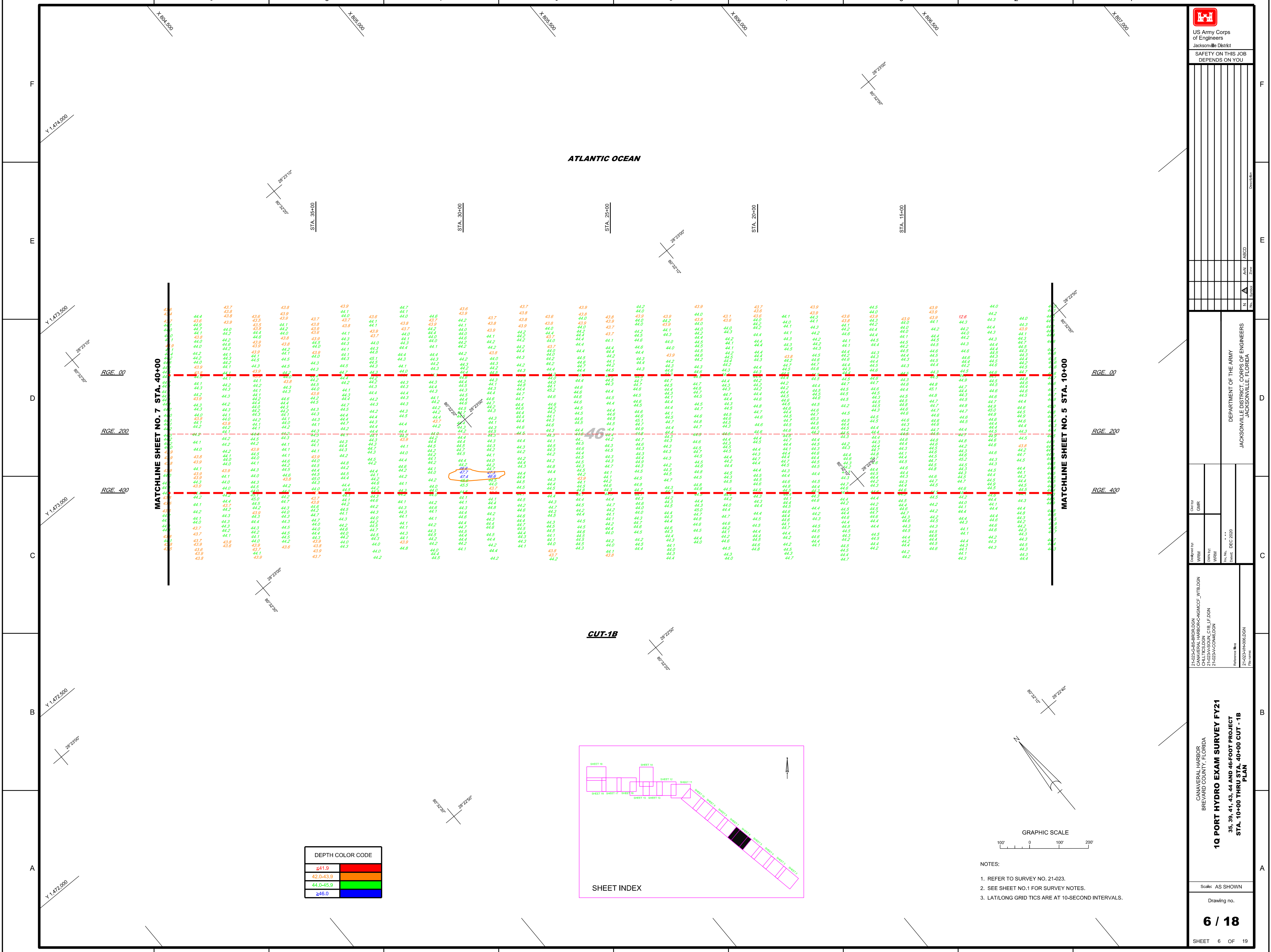
DEPTH	COLOR CODE
≤41.9	Red
42.0-43.9	Orange
44.0-45.9	Yellow
≥46.0	Blue



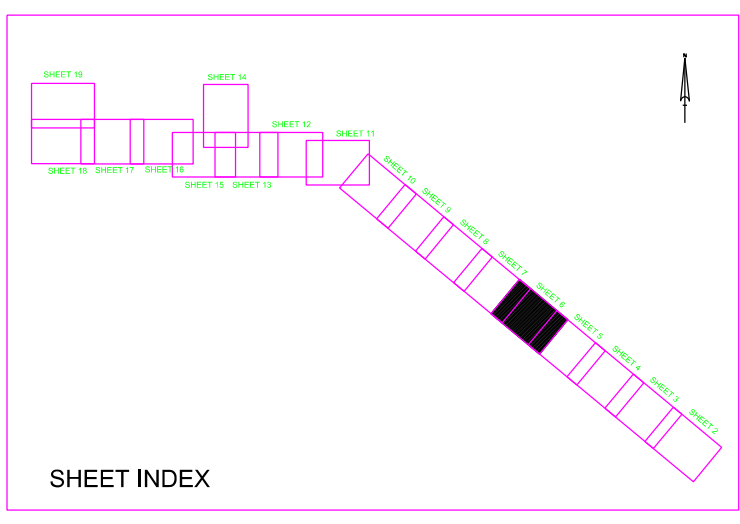
- NOTES:
- 1. REFER TO SURVEY NO. 21-023.
  - 2. SEE SHEET NO.1 FOR SURVEY NOTES.
  - 3. LAT/LONG GRID TICS ARE AT 10-SECOND INTERVALS.



10 9 8 7 6 5 4 3 2 1



DEPTH COLOR CODE	
≤41.9	Red
42.0-43.9	Orange
44.0-45.9	Green
≥46.0	Blue



- NOTES:
- 1. REFER TO SURVEY NO. 21-023.
  - 2. SEE SHEET NO. 1 FOR SURVEY NOTES.
  - 3. LAT/LONG GRID TICS ARE AT 10-SECOND INTERVALS.

**US Army Corps of Engineers**  
Jacksonville District  
SAFETY ON THIS JOB  
DEPENDS ON YOU

---

DEPARTMENT OF THE ARMY  
JACKSONVILLE DISTRICT CORPS OF ENGINEERS  
JACKSONVILLE, FLORIDA

21-023-C&S-BR010.DGN CANAVERAL HARBOR-C&S-MCCT_V18.DGN	21-023-A&S-O&P-CIB_LF.DGN	21-023-AV-CO146.DGN
---	---------------------------	---------------------

Drawn by: GHR  
Checked by: GHR  
Date: DEC 2020

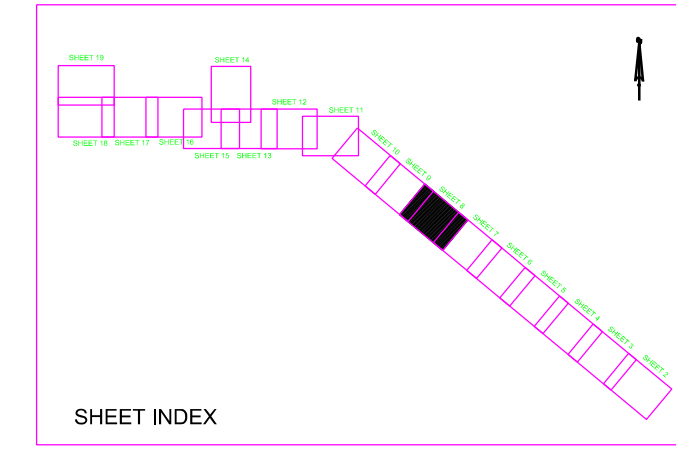
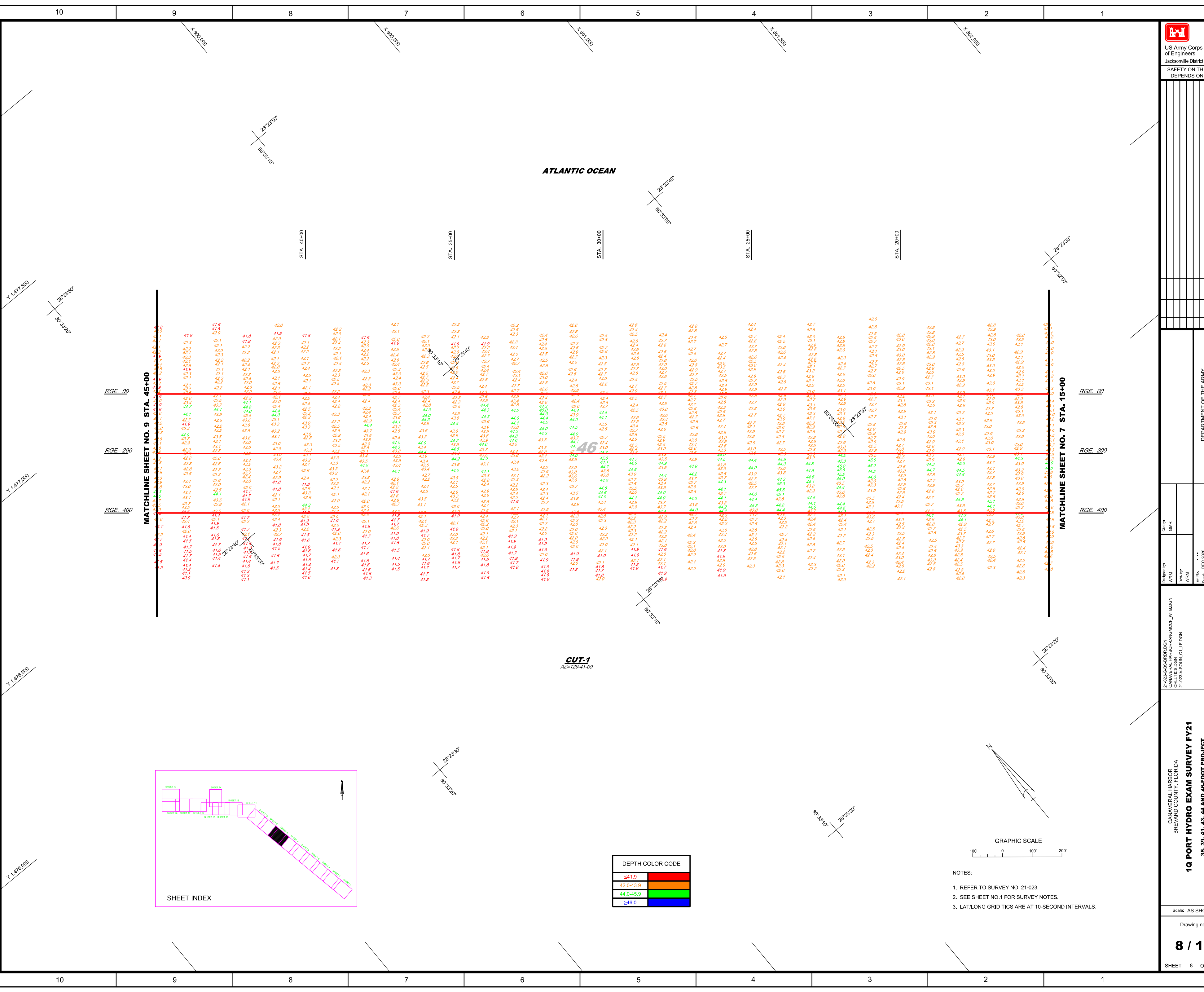
---

**1Q PORT HYDRO EXAM SURVEY FY21**  
35, 39, 41, 43, 44 AND 46-FOOT PROJECT  
STA. 10+00 THRU STA. 40+00 CUT - 1B  
PLAN

Scale: AS SHOWN  
Drawing no.  
**6 / 18**  
SHEET 6 OF 19



ATLANTIC OCEAN



DEPTH COLOR CODE	
≤41.9	Red
42.0-43.9	Orange
44.0-45.9	Green
≥46.0	Blue

NOTES:  
1. REFER TO SURVEY NO. 21-023.  
2. SEE SHEET NO.1 FOR SURVEY NOTES.  
3. LAT/LONG GRID TICS ARE AT 10-SECOND INTERVALS.

CUT-1  
AZ=129-41-09

F  
E  
D  
C  
B  
A

FT  
RT  
D  
C  
B  
A

10 9 8 7 6 5 4 3 2 1

10 9 8 7 6 5 4 3 2 1

Y 1 477 500  
Y 1 477 000  
Y 1 476 500  
Y 1 476 000

STA. 15+00  
STA. 20+00  
STA. 25+00  
STA. 30+00  
STA. 35+00  
STA. 40+00  
STA. 45+00

MATCHLINE SHEET NO. 9 STA. 45+00

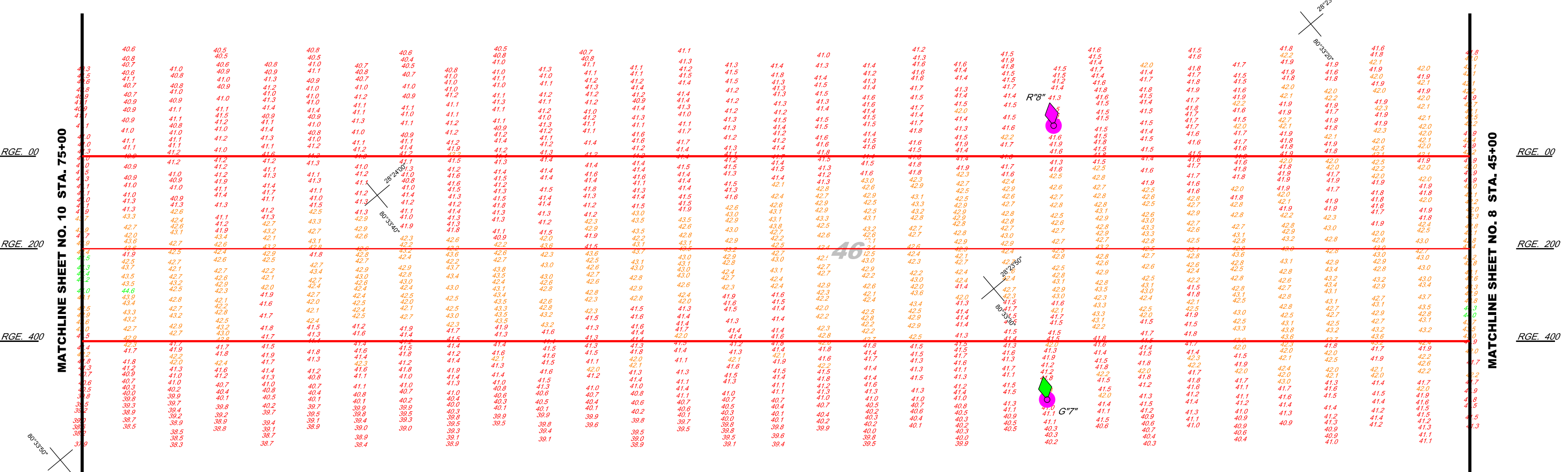
MATCHLINE SHEET NO. 7 STA. 15+00

RGE. 00  
RGE. 200  
RGE. 400

RGE. 00  
RGE. 200  
RGE. 400



ATLANTIC OCEAN

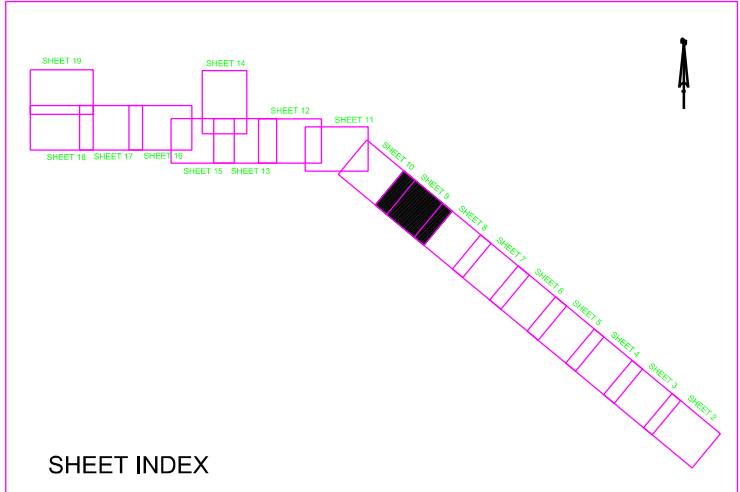


MATCHLINE SHEET NO. 10 STA. 75+00

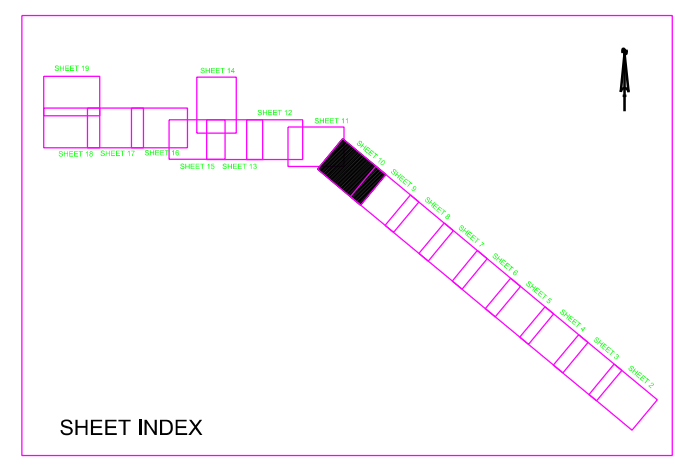
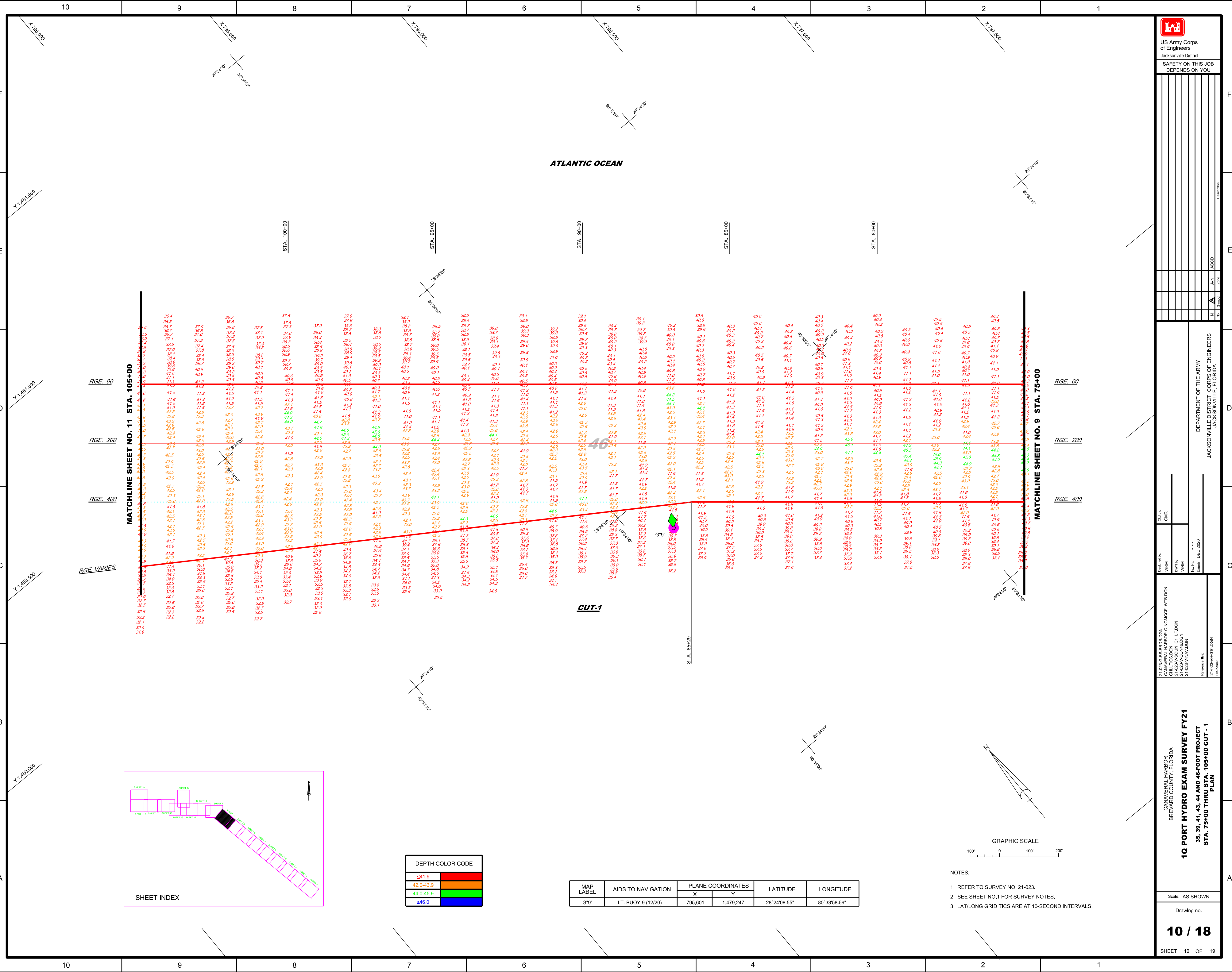
MATCHLINE SHEET NO. 8 STA. 45+00

DEPTH COLOR CODE	
≤41.9	Red
42.0-43.9	Orange
44.0-45.9	Yellow
≥46.0	Blue

MAP LABEL	AIDS TO NAVIGATION	PLANE COORDINATES		LATITUDE	LONGITUDE
		X	Y		
G7"	LT. BUOY-7 (12/20)	798,098	1,477,124	28°23'47.44"	80°33'30.72"
R8"	LT. BUOY-8 (12/20)	798,488	1,477,572	28°23'51.86"	80°33'26.34"



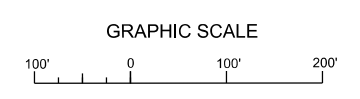
- NOTES:
- REFER TO SURVEY NO. 21-023.
  - SEE SHEET NO.1 FOR SURVEY NOTES.
  - LAT/LONG GRID TICS ARE AT 10-SECOND INTERVALS.



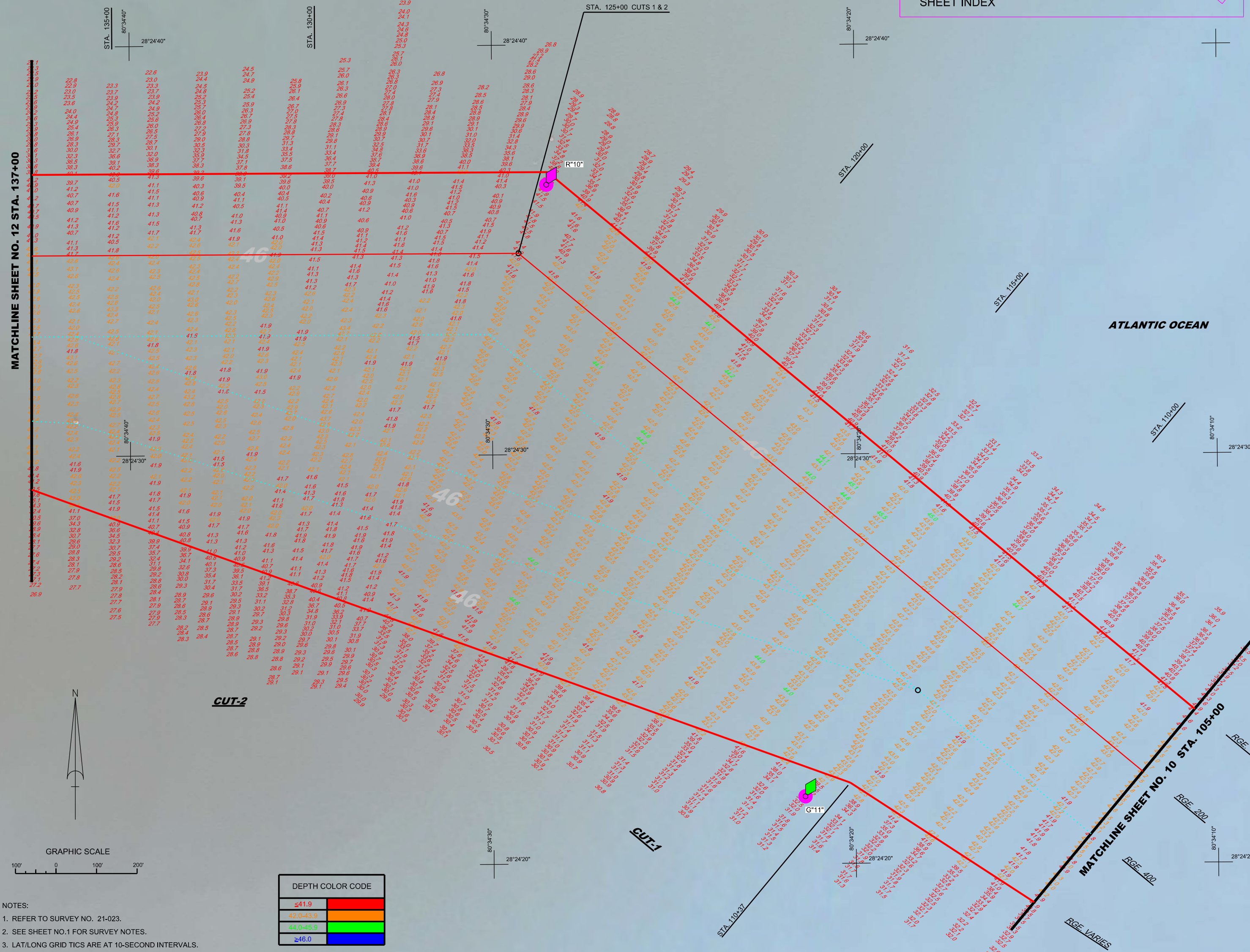
DEPTH COLOR CODE	
≤41.9	Red
42.0-43.9	Orange
44.0-45.9	Yellow
≥46.0	Blue

MAP LABEL	AIDS TO NAVIGATION	PLANE COORDINATES		LATITUDE	LONGITUDE
		X	Y		
G'9"	LT. BUOY-9 (12/20)	795,601	1,479,247	28°24'08.55"	80°33'58.59"

- NOTES:
- REFER TO SURVEY NO. 21-023.
  - SEE SHEET NO.1 FOR SURVEY NOTES.
  - LAT/LONG GRID TICS ARE AT 10-SECOND INTERVALS.



MAP LABEL	AIDS TO NAVIGATION	PLANE COORDINATES		LATITUDE	LONGITUDE
		X	Y		
R*10"	LT. BUOY-10 (12/20)	792,922	1,482,070	28°24'36.60"	80°34'28.48"
G*11"	LT. BUOY-11 (12/20)	793,561	1,480,562	28°24'21.64"	80°34'21.38"



NOTES:  
 1. REFER TO SURVEY NO. 21-023.  
 2. SEE SHEET NO.1 FOR SURVEY NOTES.  
 3. LAT/LONG GRID TICS ARE AT 10-SECOND INTERVALS.

DEPTH COLOR CODE	
≤41.9	Red
42.0-43.9	Orange
44.0-45.9	Yellow
≥46.0	Blue



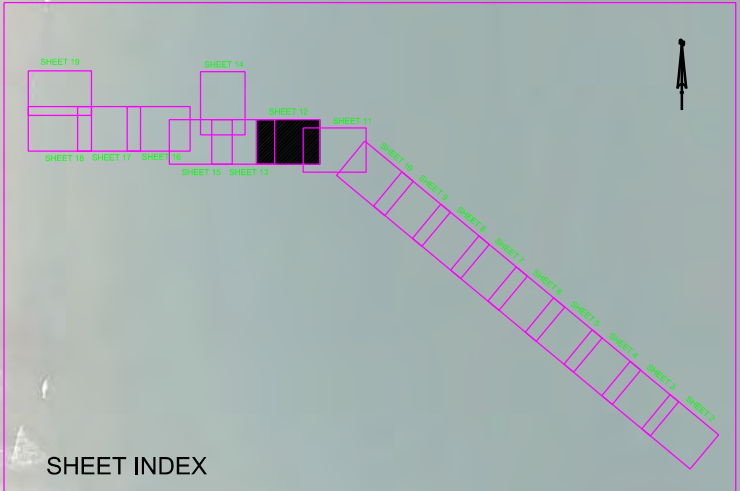
US Army Corps of Engineers  
 Jacksonville District  
 SAFETY ON THIS JOB  
 DEPENDS ON YOU

DEPARTMENT OF THE ARMY  
 JACKSONVILLE DISTRICT, CORPS OF ENGINEERS  
 JACKSONVILLE, FLORIDA

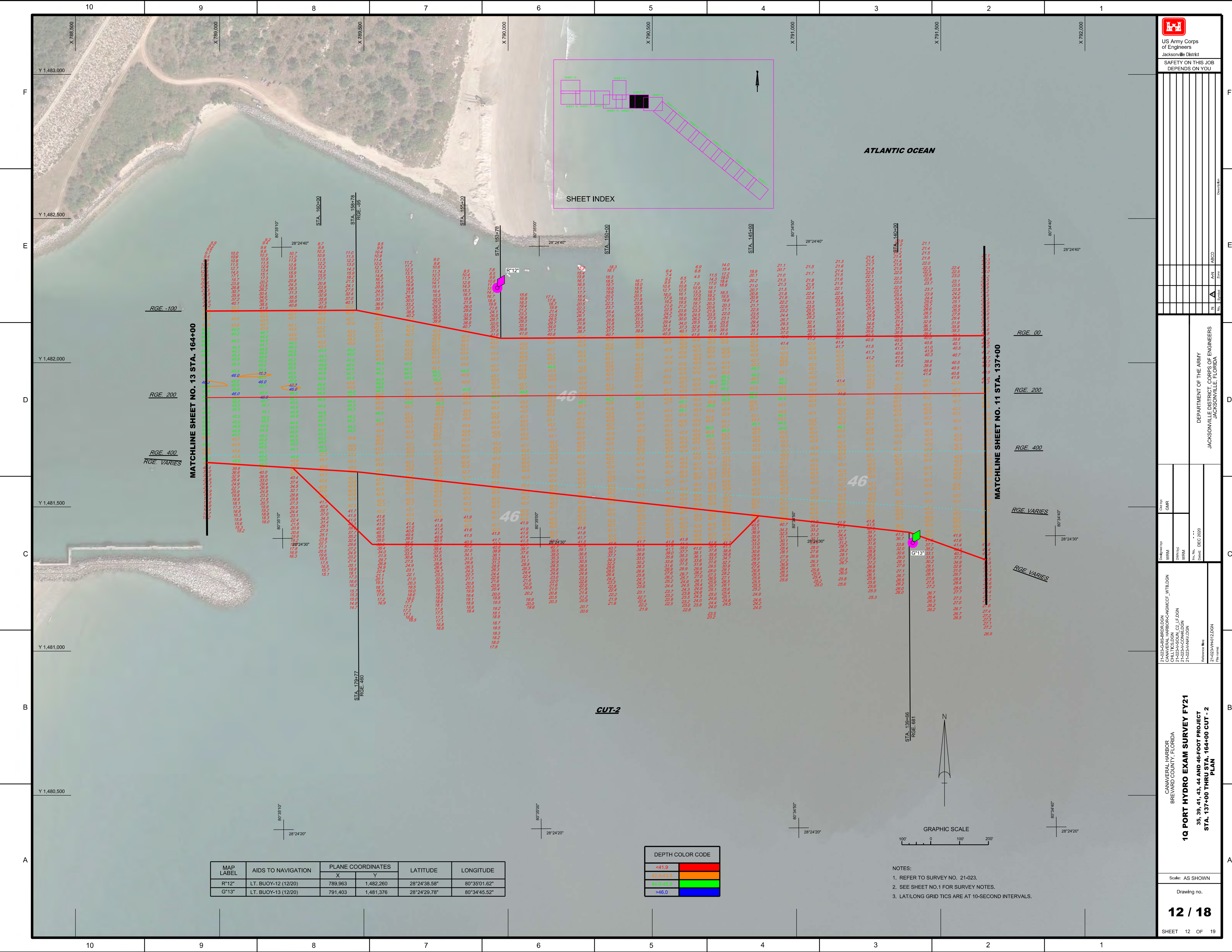
21-023-AS-BRD/DGN  
 CANAVERAL HARBOR-CNGMCC\_VTB/DGN  
 21-023-AS-SOUL\_C1\_L/DGN  
 21-023-AS-SOUL\_C2\_L/DGN  
 21-023-AS-SOUL\_C3\_L/DGN  
 21-023-AS-V/DGN

1 Q PORT HYDRO EXAM SURVEY FY21  
 35, 39, 41, 43, 44 AND 46-FOOT PROJECT  
 STA. 105+00 CUT - 1 THRU STA. 137+00 CUT - 2  
 PLAN

Scale: AS SHOWN  
 Drawing no.  
**11 / 18**  
 SHEET 11 OF 19



ATLANTIC OCEAN



MAP LABEL	AIDS TO NAVIGATION	PLANE COORDINATES		LATITUDE	LONGITUDE
		X	Y		
R"12"	LT. BUOY-12 (12/20)	789,963	1,482,260	28°24'38.58"	80°35'01.62"
G"13"	LT. BUOY-13 (12/20)	791,403	1,481,376	28°24'29.78"	80°34'45.52"

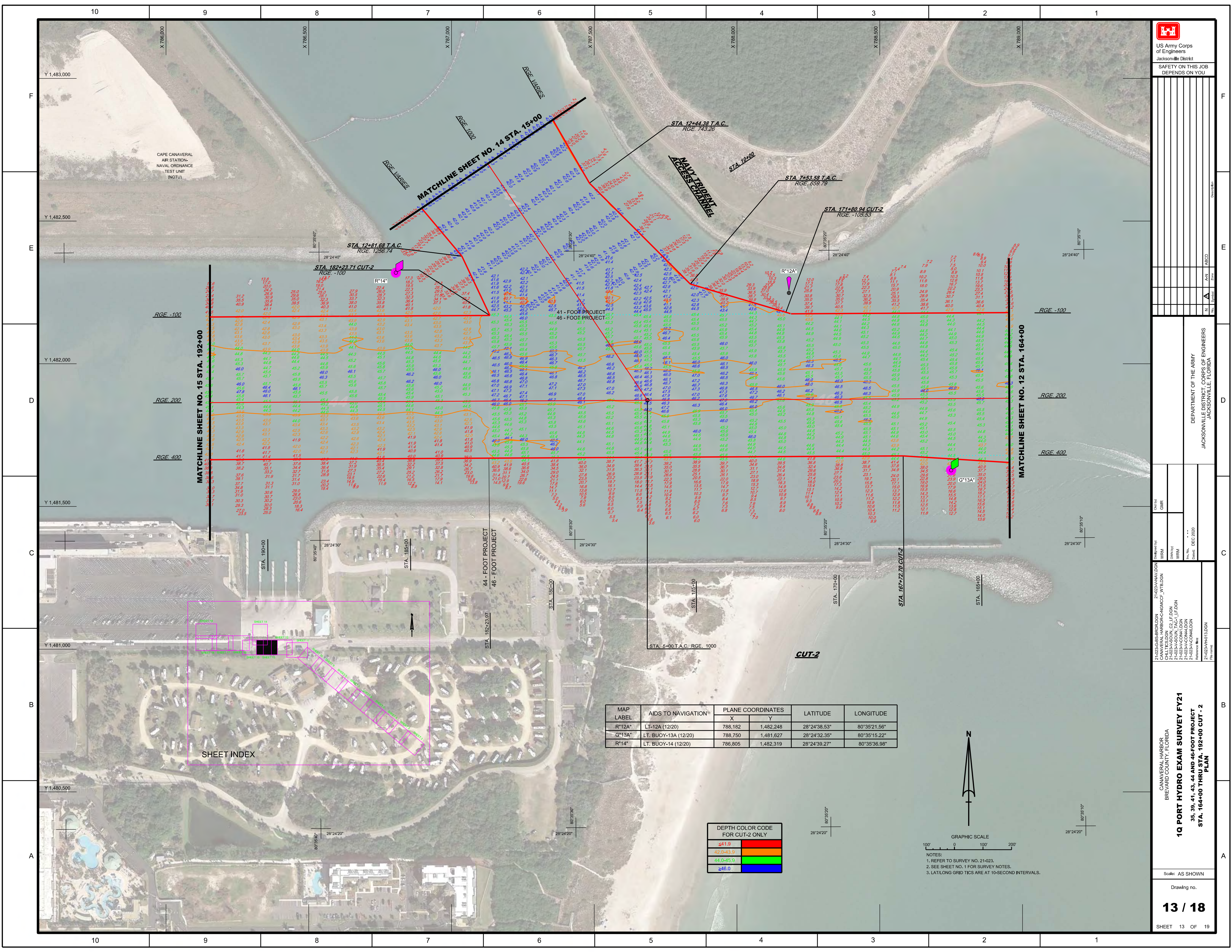
DEPTH COLOR CODE	
<41.9	Red
42.0-43.9	Orange
44.0-45.9	Yellow
>46.0	Blue

- NOTES:
- REFER TO SURVEY NO. 21-023.
  - SEE SHEET NO.1 FOR SURVEY NOTES.
  - LAT/LONG GRID TICS ARE AT 10-SECOND INTERVALS.

CANAVERAL HARBOR  
BREVARD COUNTY, FLORIDA  
**1Q PORT HYDRO EXAM SURVEY FY21**  
35, 39, 41, 43, 44 AND 46-FOOT PROJECT  
STA. 137+00 THRU STA. 164+00 CUT - 2  
PLAN

DEPARTMENT OF THE ARMY  
JACKSONVILLE DISTRICT CORPS OF ENGINEERS  
JACKSONVILLE, FLORIDA

Drawn by	Checked by	Date	Scale
WRM	GHR	DEC 2020	AS SHOWN



MAP LABEL	AIDS TO NAVIGATION	PLANE COORDINATES		LATITUDE	LONGITUDE
		X	Y		
R*12A*	LT-12A (12/20)	788,182	1,482,248	28°24'38.53"	80°35'21.56"
G*13A*	LT. BUOY-13A (12/20)	788,750	1,481,627	28°24'32.35"	80°35'15.22"
R*14*	LT. BUOY-14 (12/20)	786,805	1,482,319	28°24'39.27"	80°35'36.98"

DEPTH COLOR CODE FOR CUT-2 ONLY

≤41.9	Red
42.0-43.9	Orange
44.0-45.9	Yellow
≥46.0	Blue

GRAPHIC SCALE  
100' 0 100' 200'

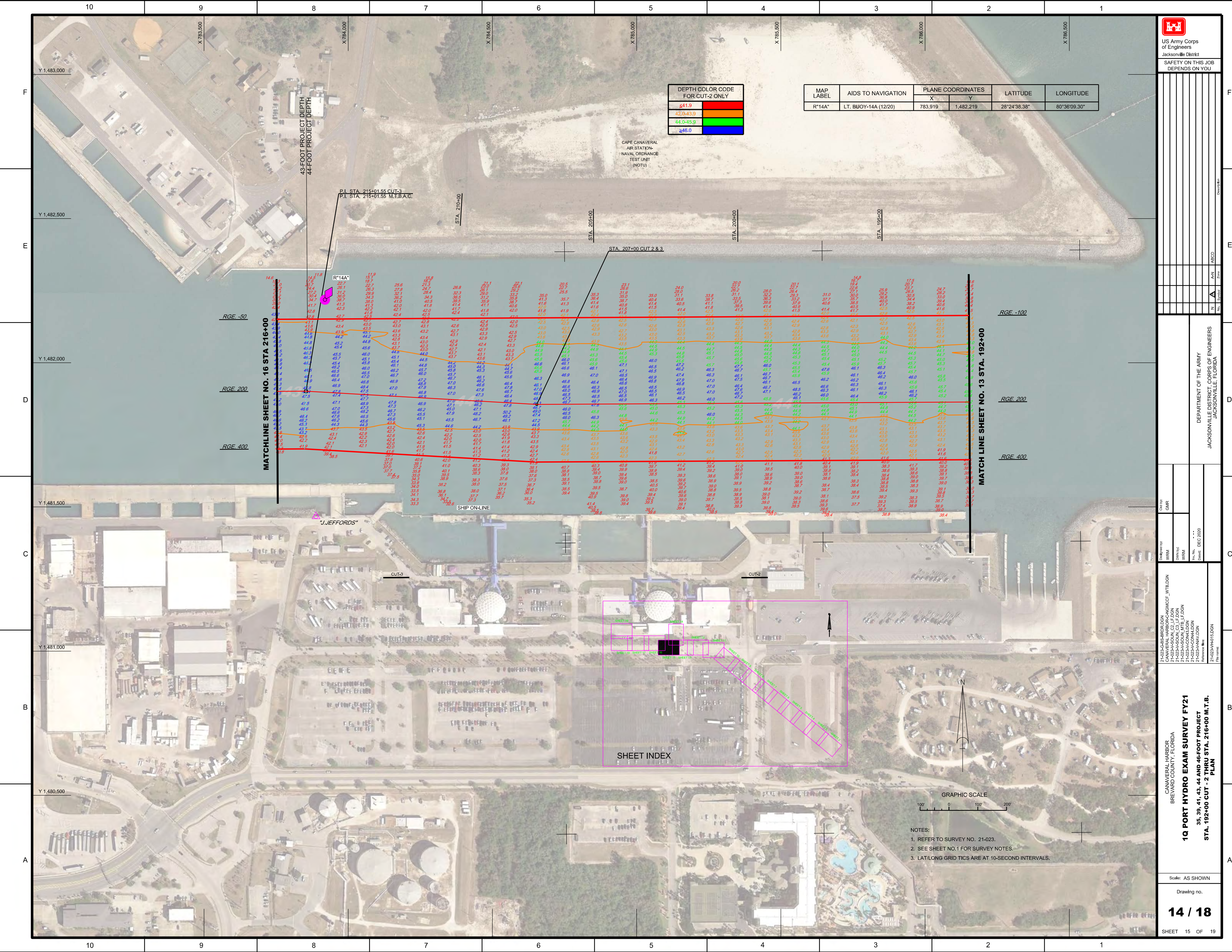
NOTES:  
1. REFER TO SURVEY NO. 21-023.  
2. SEE SHEET NO. 1 FOR SURVEY NOTES.  
3. LAT/LONG GRID TICS ARE AT 10-SECOND INTERVALS.

Checked by: GHR  
Designed by: WRM  
Drawn by: WRM  
In Charge: WRM  
Date: DEC 2020

21-023-AS-BR01.DGN  
21-023-AS-BR02.DGN  
21-023-AS-BR03.DGN  
21-023-AS-BR04.DGN  
21-023-AS-BR05.DGN  
21-023-AS-BR06.DGN  
21-023-AS-BR07.DGN  
21-023-AS-BR08.DGN  
21-023-AS-BR09.DGN  
21-023-AS-BR10.DGN  
21-023-AS-BR11.DGN  
21-023-AS-BR12.DGN  
21-023-AS-BR13.DGN  
21-023-AS-BR14.DGN  
21-023-AS-BR15.DGN  
21-023-AS-BR16.DGN  
21-023-AS-BR17.DGN  
21-023-AS-BR18.DGN  
21-023-AS-BR19.DGN  
21-023-AS-BR20.DGN  
21-023-AS-BR21.DGN  
21-023-AS-BR22.DGN  
21-023-AS-BR23.DGN  
21-023-AS-BR24.DGN  
21-023-AS-BR25.DGN  
21-023-AS-BR26.DGN  
21-023-AS-BR27.DGN  
21-023-AS-BR28.DGN  
21-023-AS-BR29.DGN  
21-023-AS-BR30.DGN  
21-023-AS-BR31.DGN  
21-023-AS-BR32.DGN  
21-023-AS-BR33.DGN  
21-023-AS-BR34.DGN  
21-023-AS-BR35.DGN  
21-023-AS-BR36.DGN  
21-023-AS-BR37.DGN  
21-023-AS-BR38.DGN  
21-023-AS-BR39.DGN  
21-023-AS-BR40.DGN  
21-023-AS-BR41.DGN  
21-023-AS-BR42.DGN  
21-023-AS-BR43.DGN  
21-023-AS-BR44.DGN  
21-023-AS-BR45.DGN  
21-023-AS-BR46.DGN  
21-023-AS-BR47.DGN  
21-023-AS-BR48.DGN  
21-023-AS-BR49.DGN  
21-023-AS-BR50.DGN  
21-023-AS-BR51.DGN  
21-023-AS-BR52.DGN  
21-023-AS-BR53.DGN  
21-023-AS-BR54.DGN  
21-023-AS-BR55.DGN  
21-023-AS-BR56.DGN  
21-023-AS-BR57.DGN  
21-023-AS-BR58.DGN  
21-023-AS-BR59.DGN  
21-023-AS-BR60.DGN  
21-023-AS-BR61.DGN  
21-023-AS-BR62.DGN  
21-023-AS-BR63.DGN  
21-023-AS-BR64.DGN  
21-023-AS-BR65.DGN  
21-023-AS-BR66.DGN  
21-023-AS-BR67.DGN  
21-023-AS-BR68.DGN  
21-023-AS-BR69.DGN  
21-023-AS-BR70.DGN  
21-023-AS-BR71.DGN  
21-023-AS-BR72.DGN  
21-023-AS-BR73.DGN  
21-023-AS-BR74.DGN  
21-023-AS-BR75.DGN  
21-023-AS-BR76.DGN  
21-023-AS-BR77.DGN  
21-023-AS-BR78.DGN  
21-023-AS-BR79.DGN  
21-023-AS-BR80.DGN  
21-023-AS-BR81.DGN  
21-023-AS-BR82.DGN  
21-023-AS-BR83.DGN  
21-023-AS-BR84.DGN  
21-023-AS-BR85.DGN  
21-023-AS-BR86.DGN  
21-023-AS-BR87.DGN  
21-023-AS-BR88.DGN  
21-023-AS-BR89.DGN  
21-023-AS-BR90.DGN  
21-023-AS-BR91.DGN  
21-023-AS-BR92.DGN  
21-023-AS-BR93.DGN  
21-023-AS-BR94.DGN  
21-023-AS-BR95.DGN  
21-023-AS-BR96.DGN  
21-023-AS-BR97.DGN  
21-023-AS-BR98.DGN  
21-023-AS-BR99.DGN  
21-023-AS-BR100.DGN

CAPE CANAVERAL HARBOR  
BREVARD COUNTY, FLORIDA

**1Q PORT HYDRO EXAM SURVEY FY21**  
35, 39, 41, 43, 44 AND 46-FOOT PROJECT  
STA. 164+00 THRU STA. 192+00 CUT - 2  
PLAN



DEPTH COLOR CODE FOR CUT-2 ONLY

$\le 41.9$	Red
42.0-43.9	Orange
44.0-45.9	Green
$\ge 46.0$	Blue

MAP LABEL	AIDS TO NAVIGATION	PLANE COORDINATES		LATITUDE	LONGITUDE
		X	Y		
R*14A	LT. BUOY-14A (12/20)	783,919	1,482,219	28°24'38.38"	80°36'09.30"

US Army Corps of Engineers  
Jacksonville District  
SAFETY ON THIS JOB  
DEPENDS ON YOU


DEPARTMENT OF THE ARMY  
JACKSONVILLE DISTRICT CORPS OF ENGINEERS  
JACKSONVILLE, FLORIDA

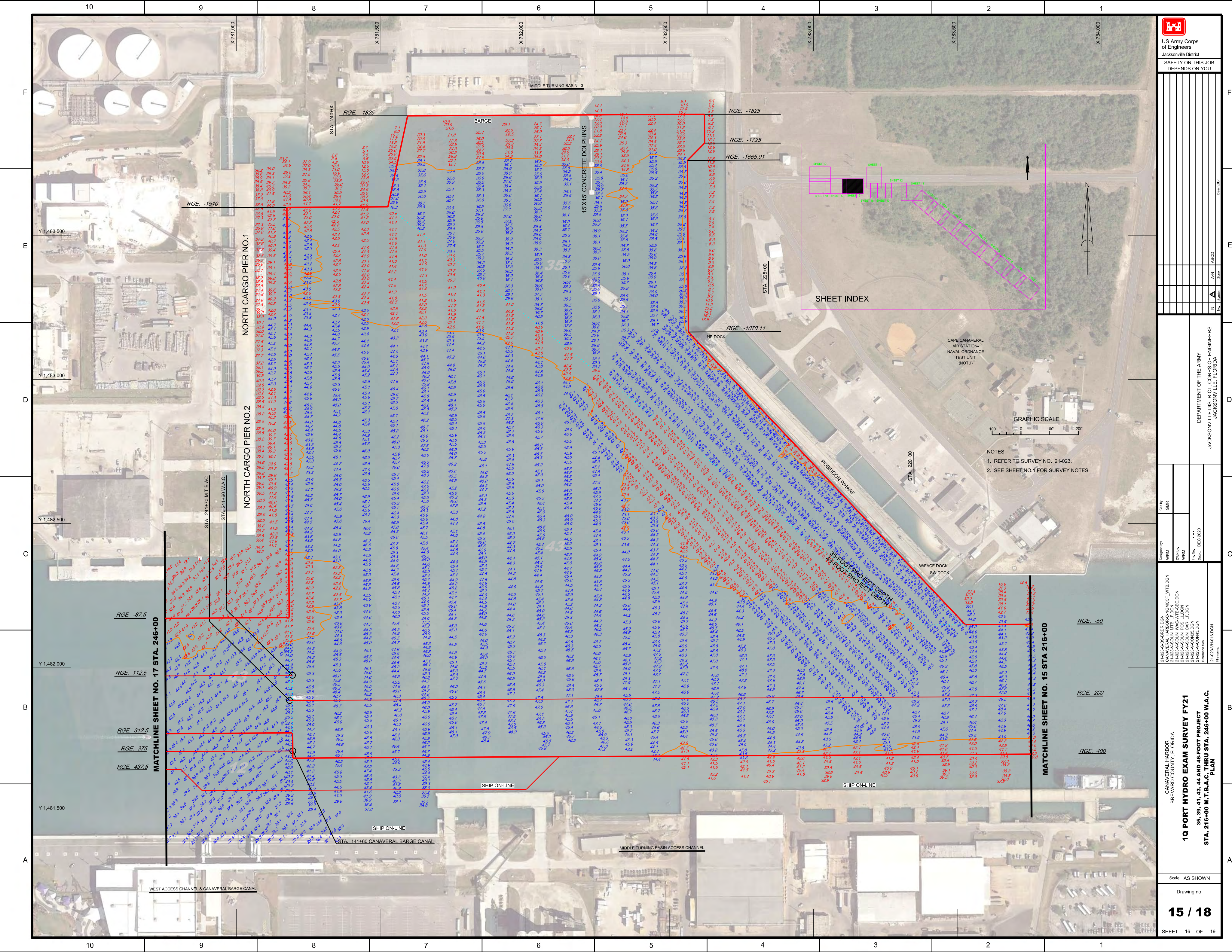
Checked by: GHR  
Designed by: WRM  
Drawn by: WRM  
In Charge: WRM  
Date: DEC 2020

21-023-CA5-HR01.DGN  
CANAVERAL HARBOUR/CANAL/CF\_WTB.DGN  
21-023-A300A-CL1.DGN  
21-023-A300A-LFB.LF.DGN  
21-023-A300A-CL1.DGN  
21-023-A300A-CL1.DGN  
21-023-A300A-CL1.DGN  
21-023-A300A-CL1.DGN

### 1Q PORT HYDRO EXAM SURVEY FY21

35, 39, 41, 43, 44 AND 46-FOOT PROJECT  
STA. 192+00 CUT - 2 THRU STA. 216+00 M.T.B.  
PLAN

- NOTES:
- 1. REFER TO SURVEY NO. 21-023.
  - 2. SEE SHEET NO.1 FOR SURVEY NOTES.
  - 3. LAT/LONG GRID TICS ARE AT 10-SECOND INTERVALS.



Sheet Index Table:

Sheet No.	Sheet Title
SHEET 10	
SHEET 11	
SHEET 12	
SHEET 13	
SHEET 14	
SHEET 15	
SHEET 16	
SHEET 17	
SHEET 18	
SHEET 19	
SHEET 20	
SHEET 21	
SHEET 22	
SHEET 23	
SHEET 24	
SHEET 25	
SHEET 26	
SHEET 27	
SHEET 28	
SHEET 29	
SHEET 30	
SHEET 31	
SHEET 32	
SHEET 33	
SHEET 34	
SHEET 35	
SHEET 36	
SHEET 37	
SHEET 38	
SHEET 39	
SHEET 40	
SHEET 41	
SHEET 42	
SHEET 43	
SHEET 44	
SHEET 45	
SHEET 46	
SHEET 47	
SHEET 48	
SHEET 49	
SHEET 50	
SHEET 51	
SHEET 52	
SHEET 53	
SHEET 54	
SHEET 55	
SHEET 56	
SHEET 57	
SHEET 58	
SHEET 59	
SHEET 60	
SHEET 61	
SHEET 62	
SHEET 63	
SHEET 64	
SHEET 65	
SHEET 66	
SHEET 67	
SHEET 68	
SHEET 69	
SHEET 70	
SHEET 71	
SHEET 72	
SHEET 73	
SHEET 74	
SHEET 75	
SHEET 76	
SHEET 77	
SHEET 78	
SHEET 79	
SHEET 80	
SHEET 81	
SHEET 82	
SHEET 83	
SHEET 84	
SHEET 85	
SHEET 86	
SHEET 87	
SHEET 88	
SHEET 89	
SHEET 90	
SHEET 91	
SHEET 92	
SHEET 93	
SHEET 94	
SHEET 95	
SHEET 96	
SHEET 97	
SHEET 98	
SHEET 99	
SHEET 100	

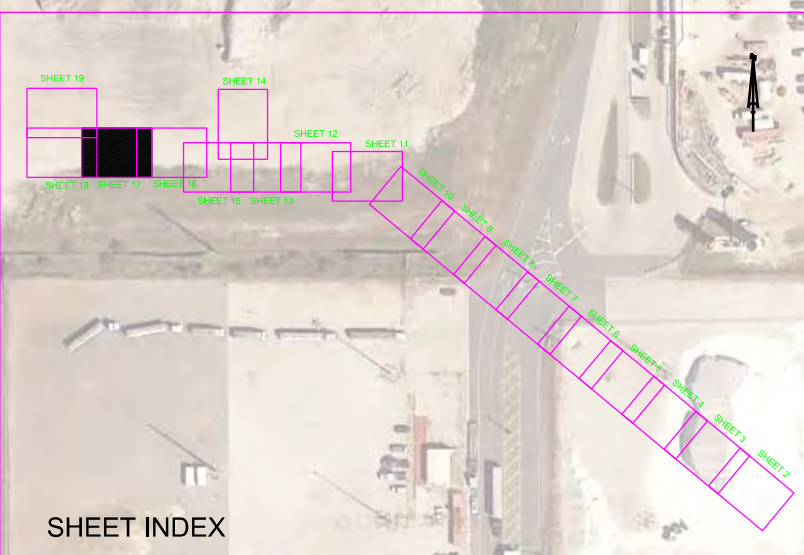
DEPARTMENT OF THE ARMY  
JACKSONVILLE DISTRICT CORPS OF ENGINEERS  
JACKSONVILLE, FLORIDA

NOTES:  
1. REFER TO SURVEY NO. 21-023.  
2. SEE SHEET NO. 1 FOR SURVEY NOTES.

1Q PORT HYDRO EXAM SURVEY FY21  
35, 39, 41, 43, 44 AND 46-FOOT PROJECT  
STA. 216+00 M.T.B.A.C. THRU STA. 246+00 W.A.C.  
PLAN

Scale: AS SHOWN  
Drawing no.  
15 / 18

MAP LABEL	AIDS TO NAVIGATION	PLANE COORDINATES		LATITUDE	LONGITUDE
		X	Y		
G*15*	LT. BUOY-15 (12/20)	779.622	1,481.744	28°24'33.81"	80°36'57.44"
G*19*	LT. BUOY-19 (12/20)	778.131	1,481.721	28°24'33.63"	80°37'14.14"



MATCHLINE SHEET NO. 18 STA. 276+00

MATCHLINE SHEET NO. 16 STA. 246+00

RGE. -87.5  
RGE. 112.5  
RGE. 312.5  
RGE. 375  
RGE. 400  
RGE. 437.5

RGE. -87.5  
RGE. 112.5  
RGE. 312.5  
RGE. 375  
RGE. 437.5

- NOTES:
1. REFER TO SURVEY NO. 21-023.
  2. SEE SHEET NO.1 FOR SURVEY NOTES.



US Army Corps of Engineers  
Jacksonville District  
SAFETY ON THIS JOB DEPENDS ON YOU

DEPARTMENT OF THE ARMY  
JACKSONVILLE DISTRICT, CORPS OF ENGINEERS  
JACKSONVILLE, FLORIDA

21-023-C&S-BR/BLDN  
CANAVERAL HARBOR-C&S-INT/BLDN  
21-023-CA-C&S-CON/BLDN  
21-023-CA-H&I/BLDN

CANAVERAL HARBOR  
BREVARD COUNTY, FLORIDA  
1Q PORT HYDRO EXAM SURVEY FY21  
35, 39, 41, 43, 44 AND 46-FOOT PROJECT  
STA. 246+00 W.A.C. THRU STA. 276+00 W.T.B.  
PLAN

Scale: AS SHOWN  
Drawing no.  
**16 / 18**  
SHEET 17 OF 19



MAP LABEL	AIDS TO NAVIGATION	PLANE COORDINATES		LATITUDE	LONGITUDE
		X	Y		
R <sup>2</sup>	DBN-2 (12/20)	776,567	1,481,789	28°24'34.35"	80°37'31.65"
MOORING BUOY	MOORING BUOY (12/20)	775,988	1,481,791	28°24'34.39"	80°37'38.13"

MATCH LINE SHEET NO. 19 RGE. -1700

CRUISE SHIP TERMINAL

SHEET INDEX

RGE -587.50

MOORING BUOY

GRAPHIC SCALE

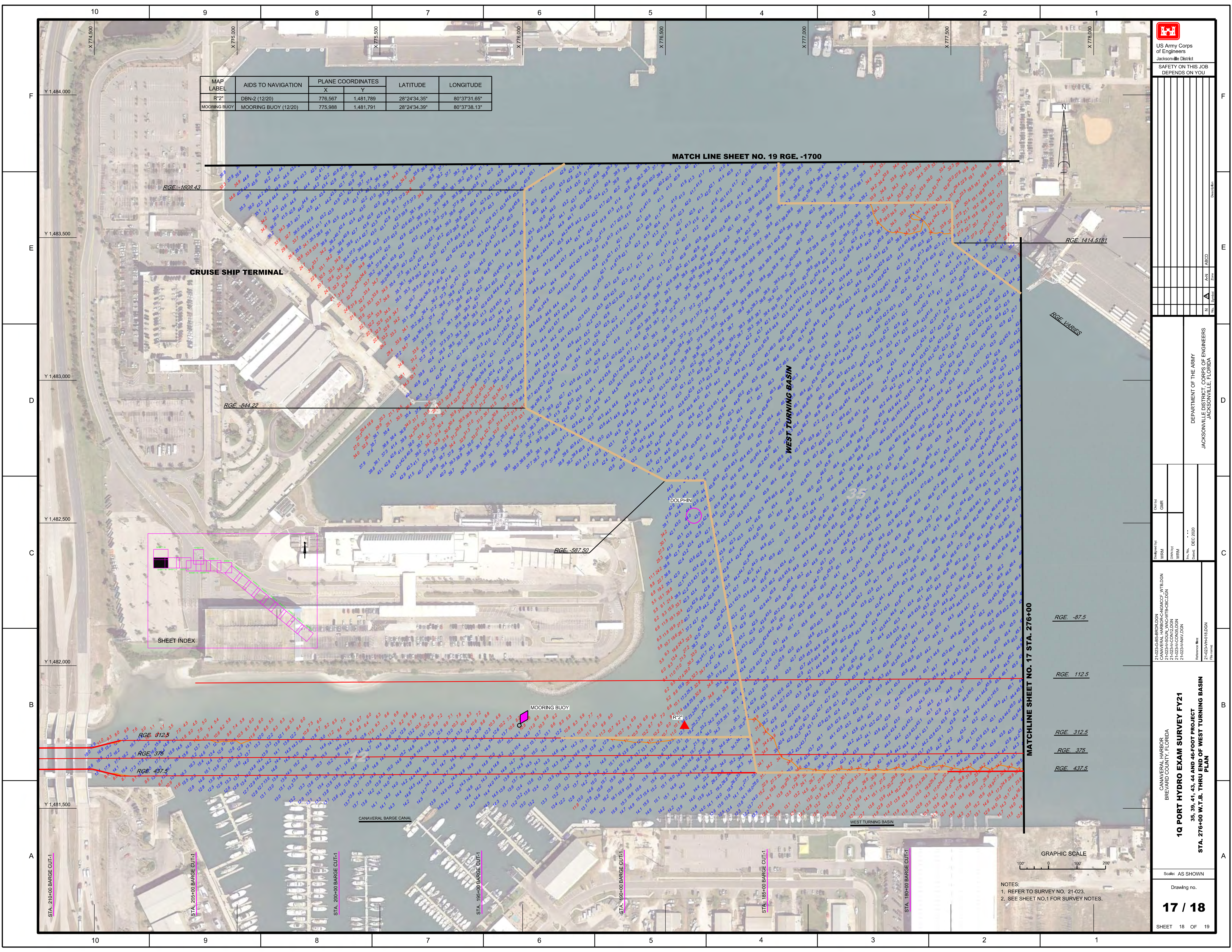
NOTES:  
1. REFER TO SURVEY NO. 21-023.  
2. SEE SHEET NO.1 FOR SURVEY NOTES.

1	2	3	4	5	6	7	8	9	10
A	B	C	D	E	F				

DEPARTMENT OF THE ARMY  
JACKSONVILLE DISTRICT, CORPS OF ENGINEERS  
JACKSONVILLE, FLORIDA

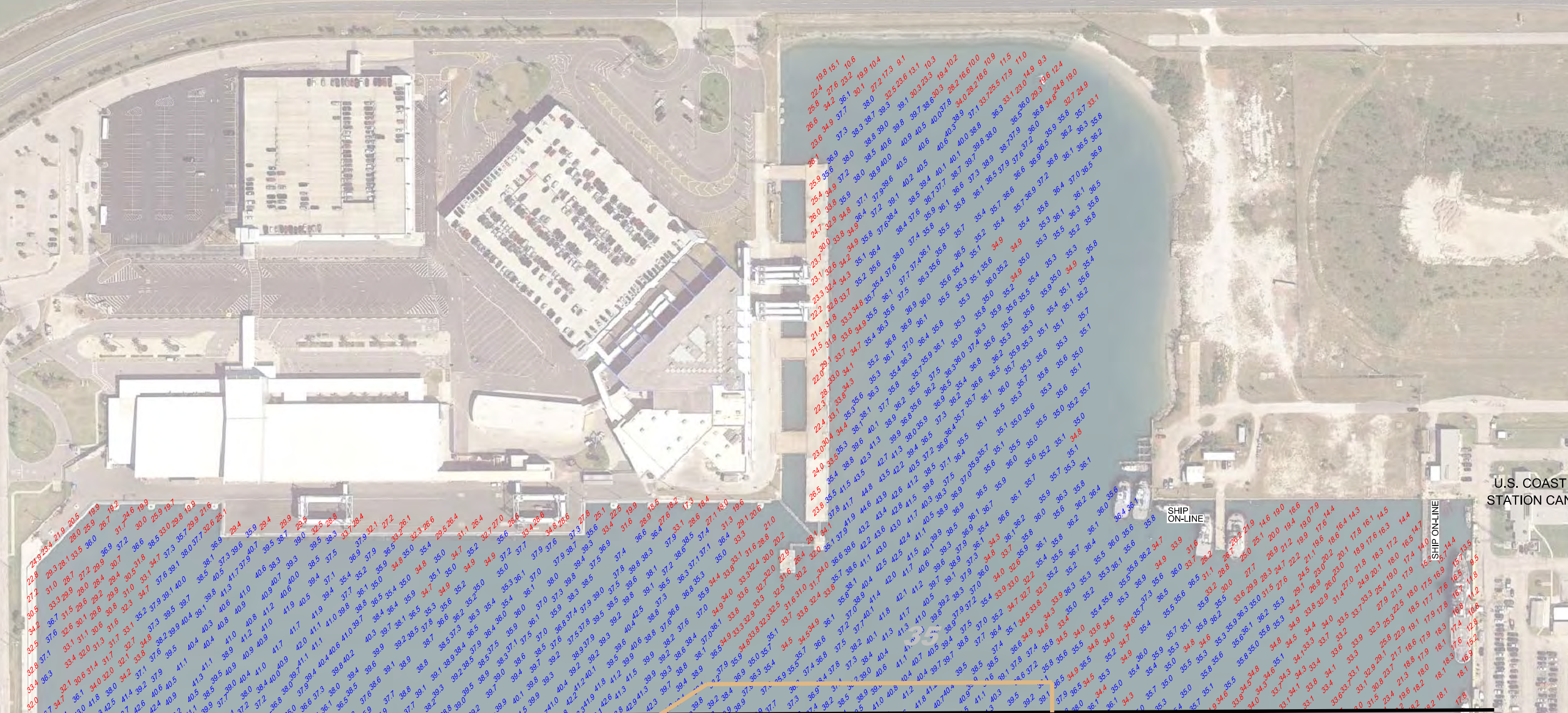
21-023-C&S-BROLDON  
CANAVERAL MARSH-C&NGMCCF\_WTB.DGN  
21-023-CA-CON12.DGN  
21-023-CA-HMV.DGN  
Scale: AS SHOWN  
Drawing no.  
17 / 18  
SHEET 18 OF 19

1 Q PORT HYDRO EXAM SURVEY FY21  
35, 39, 41, 43, 44 AND 46-FOOT PROJECT  
STA. 276+00 W.T.B. THRU END OF WEST TURNING BASIN  
PLAN





SHEET INDEX



MATCH LINE SHEET NO. 18 RGE. -1700

WEST TURNING BASIN

SHIP ON-LINE

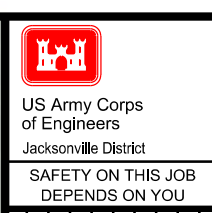
SHIP ON-LINE

U.S. COAST GUARD  
STATION CANAVERAL



GRAPHIC SCALE

NOTES:  
1. REFER TO SURVEY NO. 21-023.  
2. SEE SHEET NO. 1 FOR SURVEY NOTES.



US Army Corps of Engineers  
Jacksonville District  
SAFETY ON THIS JOB  
DEPENDS ON YOU

Sheet No.	18
Zone	AN
Symbol	
Date	
Drawn by	
Checked by	
Scale	
Project No.	
Project Name	
Project Location	
Project Date	
Project Status	
Project Manager	
Project Engineer	
Project Designer	
Project Checker	
Project Approver	

DEPARTMENT OF THE ARMY  
JACKSONVILLE DISTRICT, CORPS OF ENGINEERS  
JACKSONVILLE, FLORIDA

Checked by: GHR  
Designed by: WRM  
Drawn by: WRM  
File No.: 21-023-001  
Date: DEC 2020

21-023-CAS-BRDLDN  
CANAVERAL HARBOR-CANAVERR  
21-023-001-18-1700-001

CANAVERAL HARBOR  
BREVARD COUNTY, FLORIDA  
**1Q PORT HYDRO EXAM SURVEY FY21**  
35, 39, 41, 43, 44 AND 46-FOOT PROJECT  
**WEST TURNING BASIN**  
PLAN

Scale: AS SHOWN  
Drawing no.

**18 / 18**  
SHEET 18 OF 19